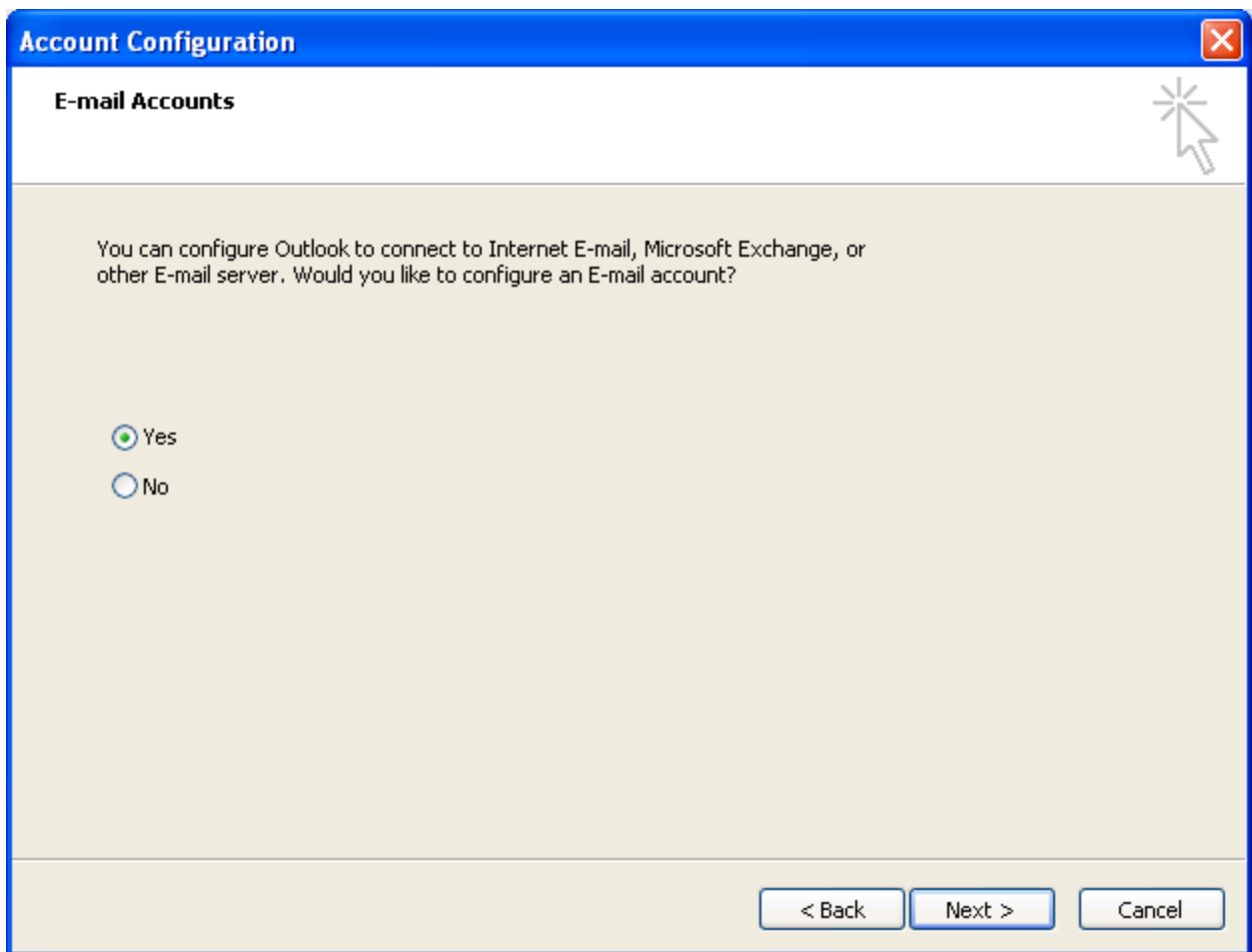



Connect Outlook 2007 to Exchange 2003 using RPC over HTTP




- Click **Next**



- Click **Next**

Add New E-mail Account 

Auto Account Setup 

Your Name:
Example: Barbara Sankovic

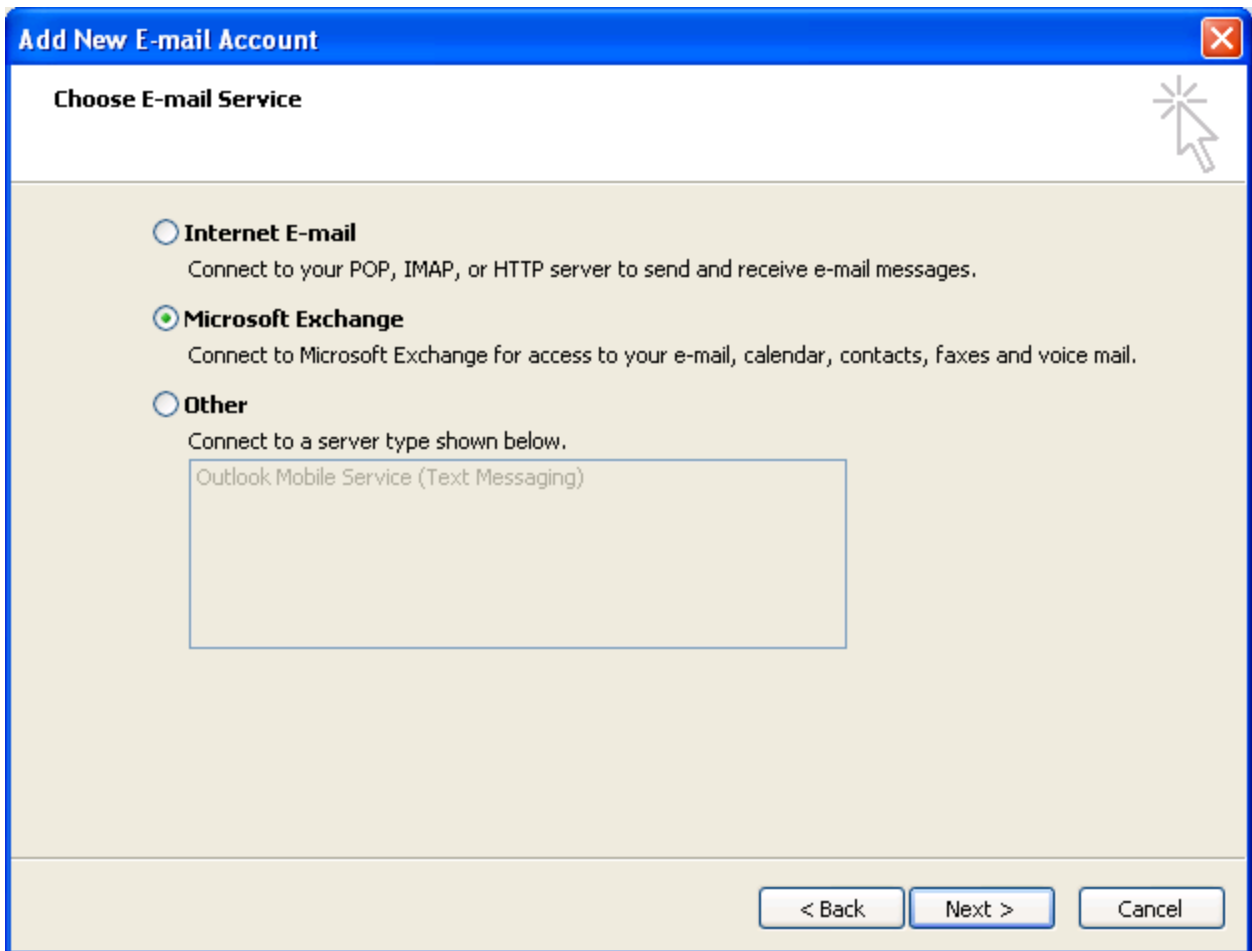
E-mail Address:
Example: barbara@contoso.com

Password:


Retype Password:
Type the password your Internet service provider has given you.


Manually configure server settings or additional server types

- Click **Next**



- Click **Next**

Add New E-mail Account 

Microsoft Exchange Settings 

You can enter the required information to connect to Microsoft Exchange.

Type the name of your Microsoft Exchange server. For information, see your system administrator.

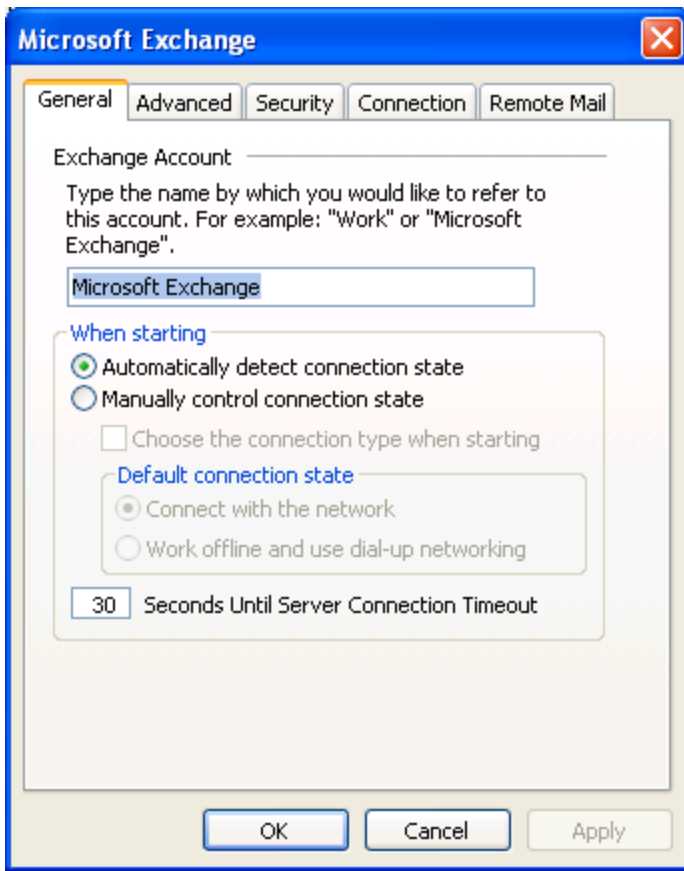
Microsoft Exchange server:

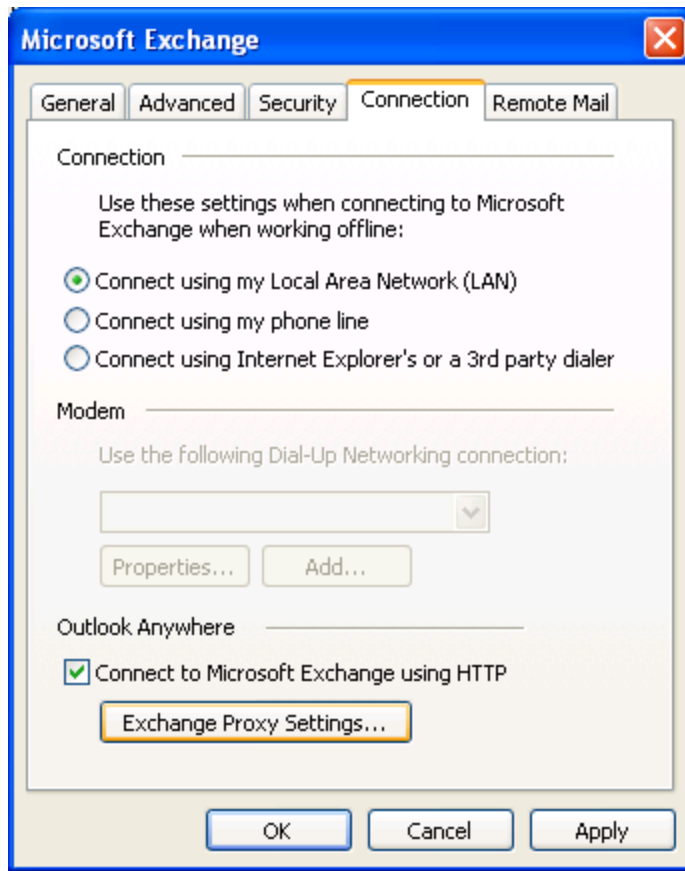
Use Cached Exchange Mode

Type the name of the mailbox set up for you by your administrator. The mailbox name is usually your user name.

User Name:

- Click **More Settings ...**





- Click **Exchange Proxy Settings...**

Microsoft Exchange Proxy Settings ✖

Microsoft Office Outlook can communicate with Microsoft Exchange over the Internet by nesting Remote Procedure Calls (RPC) within HTTP packets. Select the protocol and the identity verification method that you want to use. If you don't know which options to select, contact your Exchange Administrator.

Connection settings

Use this URL to connect to my proxy server for Exchange:
https://

Connect using SSL only

Only connect to proxy servers that have this principal name in their certificate:

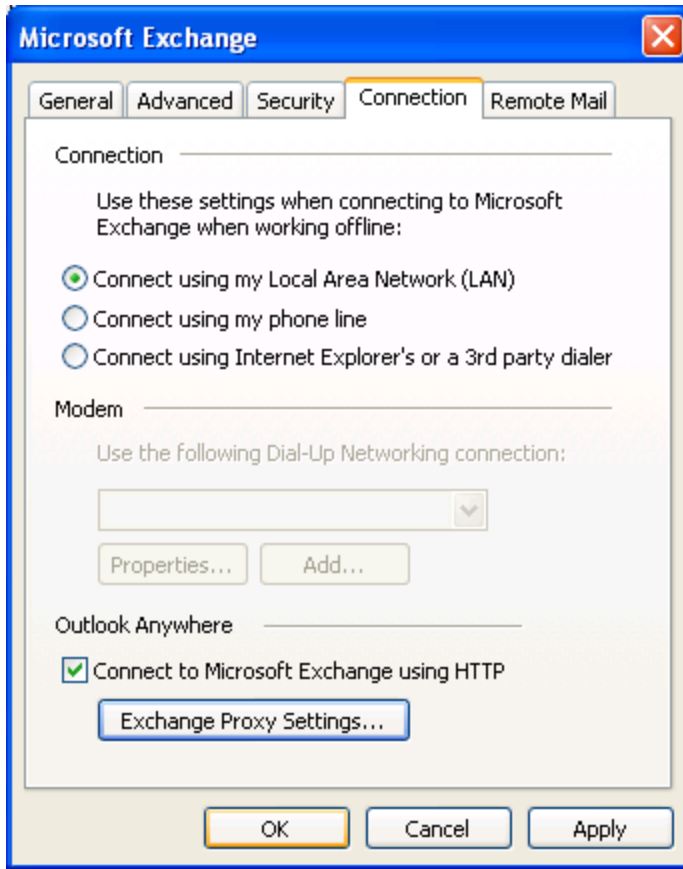
On fast networks, connect using HTTP first, then connect using TCP/IP

On slow networks, connect using HTTP first, then connect using TCP/IP

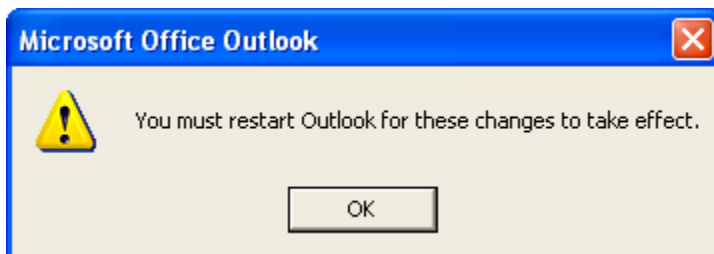
Proxy authentication settings

Use this authentication when connecting to my proxy server for Exchange:
 ▼


- Click **OK**




- Click **OK**



- Click **OK**

Add New E-mail Account 

Microsoft Exchange Settings 

You can enter the required information to connect to Microsoft Exchange.

Type the name of your Microsoft Exchange server. For information, see your system administrator.

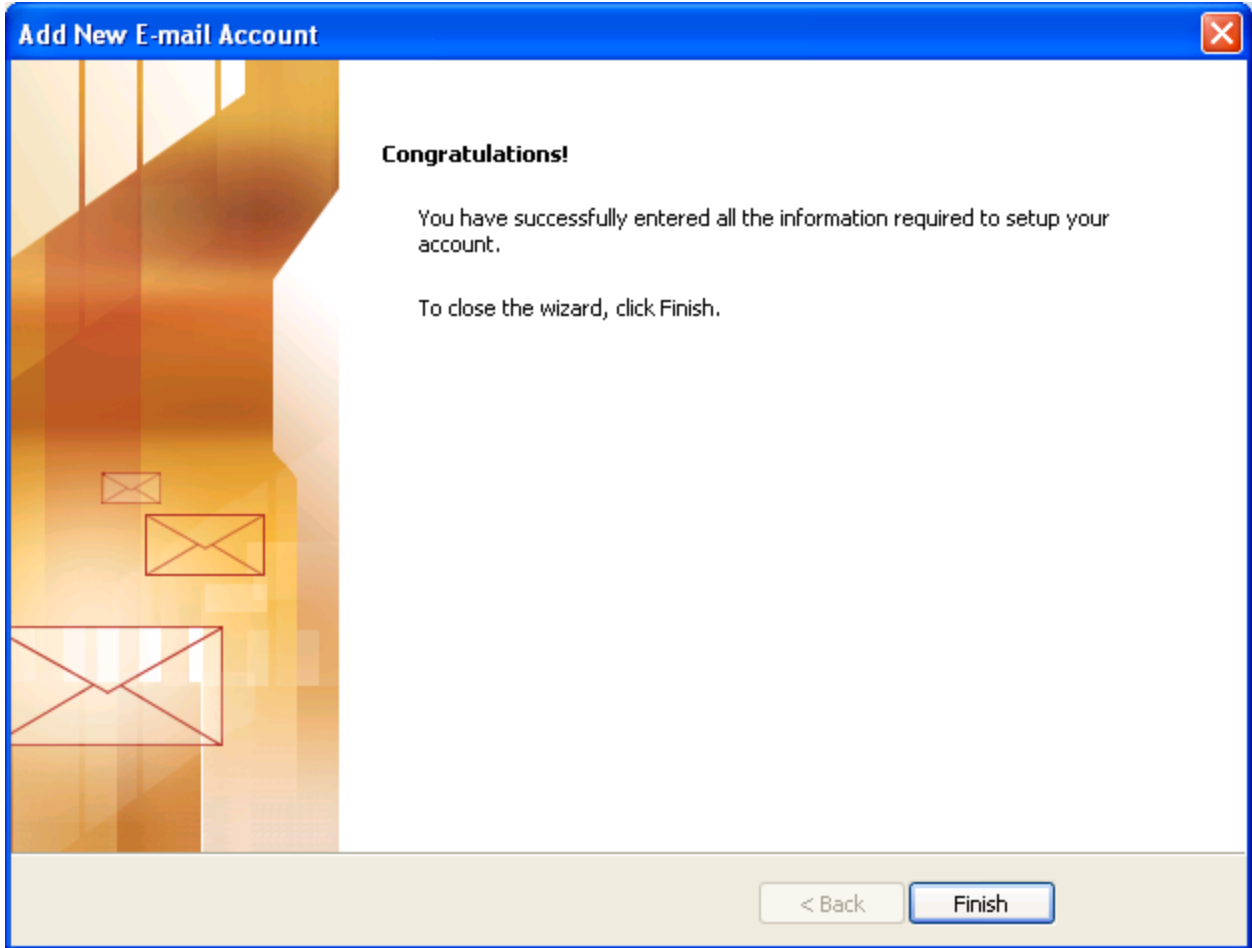
Microsoft Exchange server:

Use Cached Exchange Mode

Type the name of the mailbox set up for you by your administrator. The mailbox name is usually your user name.


User Name:

- Click **Next**



- Click **Finish**

Connect to mail2.physics.leidenuniv.nl



Welcome back to mail2.physics.leidenuniv.nl

User name:

Password:

Remember my password