

Mac OS X - Adding a Networked Print Queue (SMB)

Overview

These directions explain how to add a networked printer on Mac OS X via the SMB protocol. This is typically used for:

- - Printing from **non-Active Directory-bound** Macs to a Windows print server (e.g., print.physics.leidenuniv.nl).

AD-bound Macs may occasionally connect to a Windows server via SMB as well.

Systems

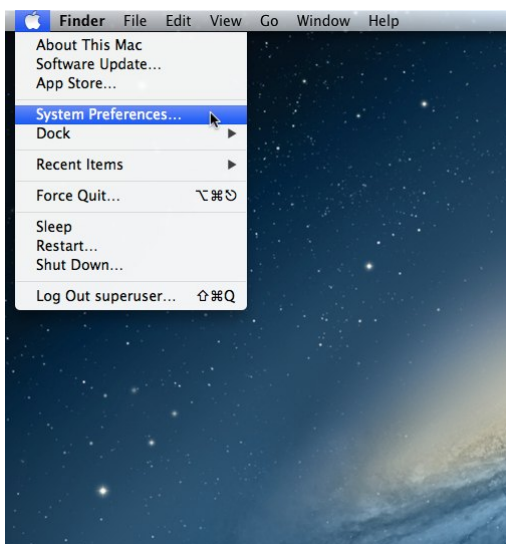
- **Non-Active Directory-bound** computers running Mac OS X

Users

- All users of above systems

Actions

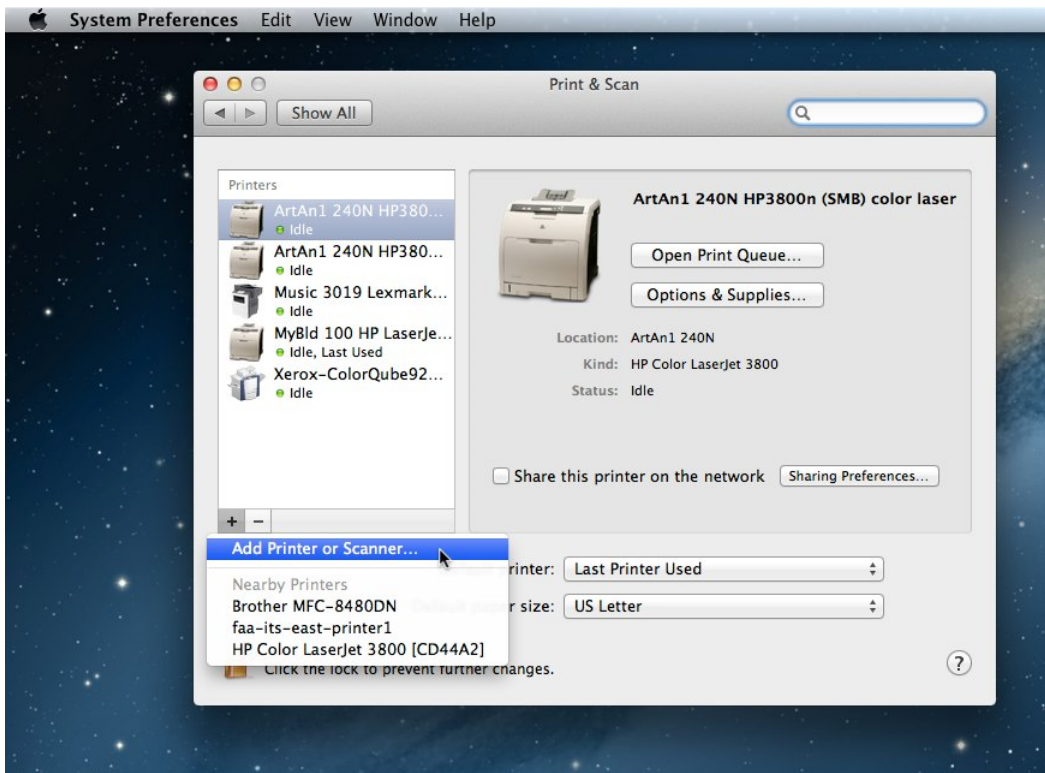
1. Gather the following information for the networked printer: server URL, queue name, printer location, and printer model information/features. (see label on the printer)
2. (If necessary) Download and install the appropriate driver for the printer.



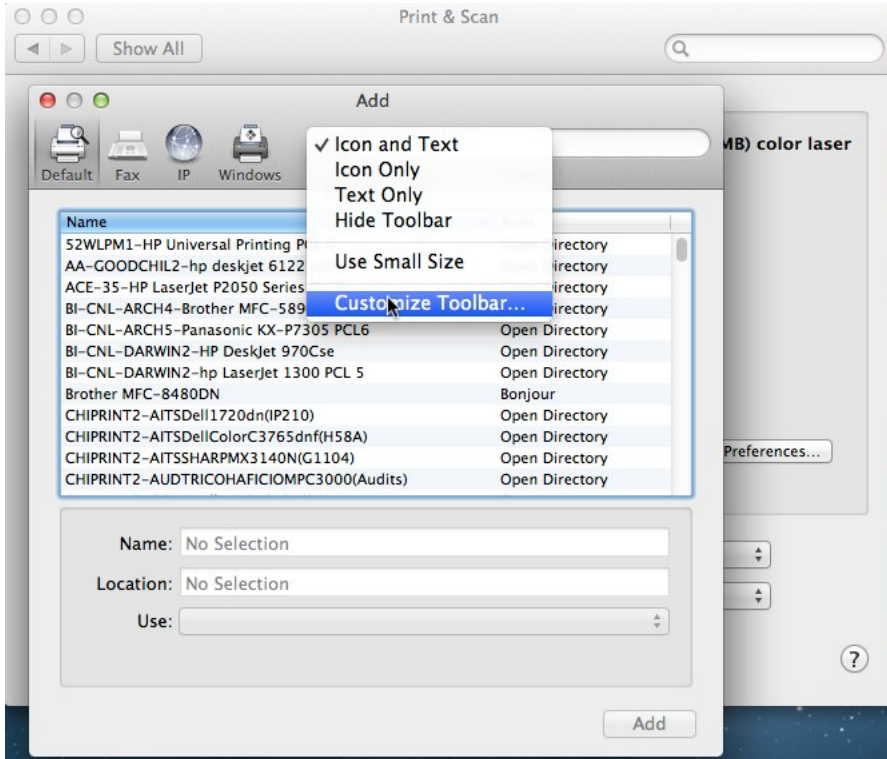
3. Click on "Print & Scan" and unlock the preference pane (if necessary).



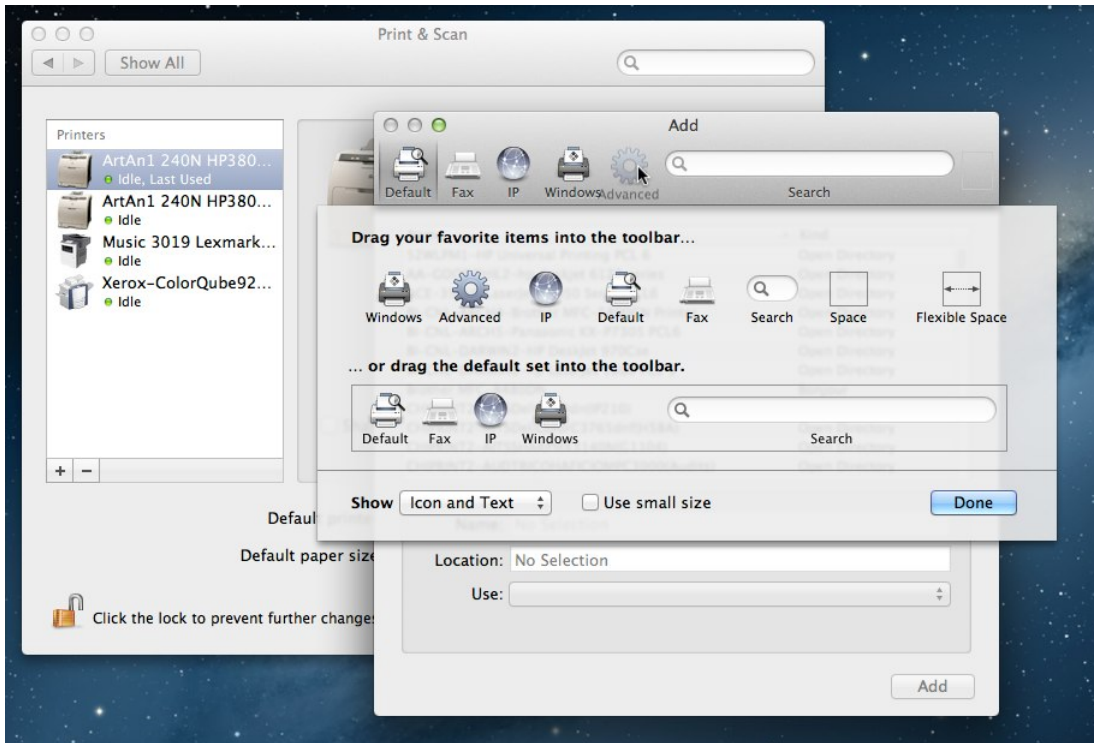
4. Click on "+" underneath the list of printers and select "Add Printer or Scanner..." in the menu that appears.



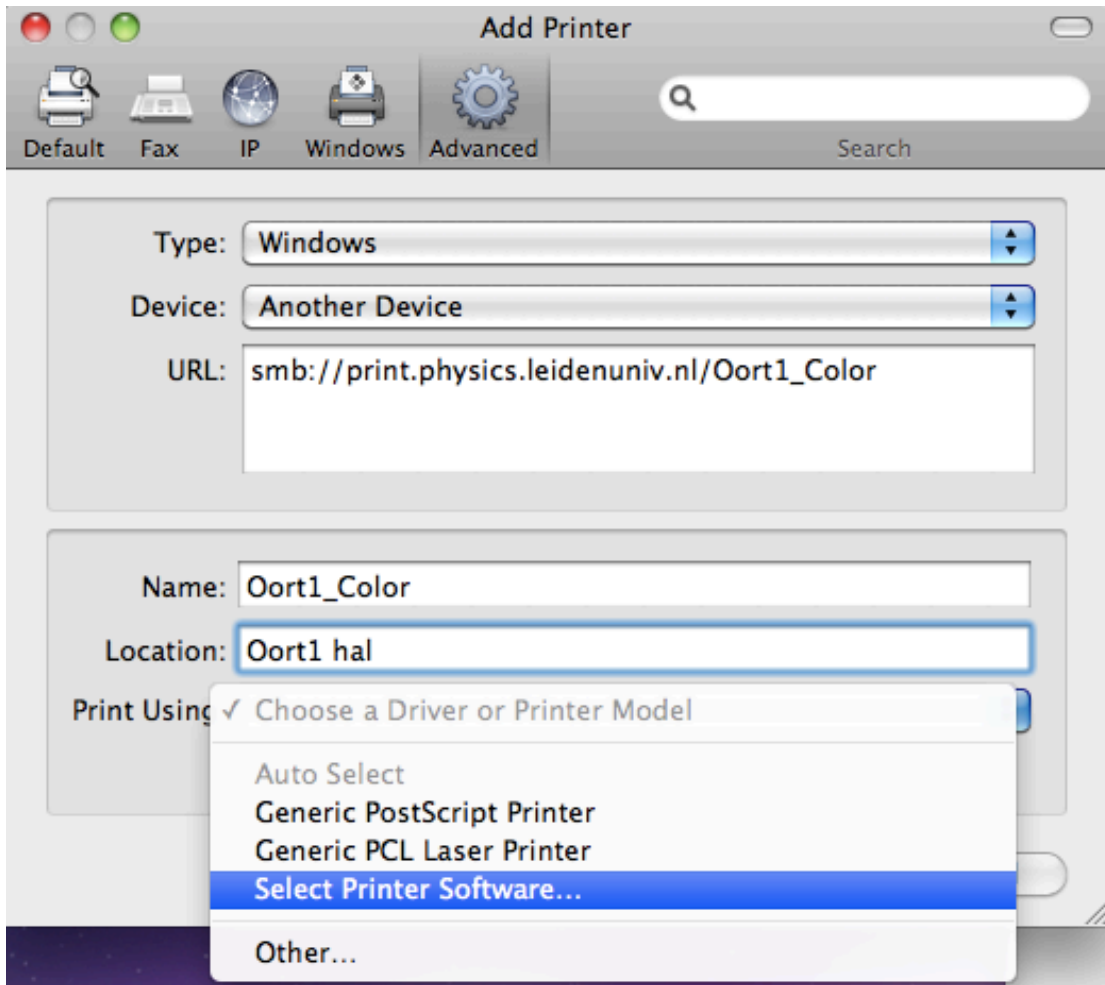
- An "Add" window will appear. If there is **not** already an "Advanced" button in its toolbar (on top, alongside "Default", "Fax", "IP", etc.), you'll need to customize the toolbar. Control+click on the toolbar area and select "Customize Toolbar...".



- Drag the "Advanced" item up onto the toolbar and click "Done".

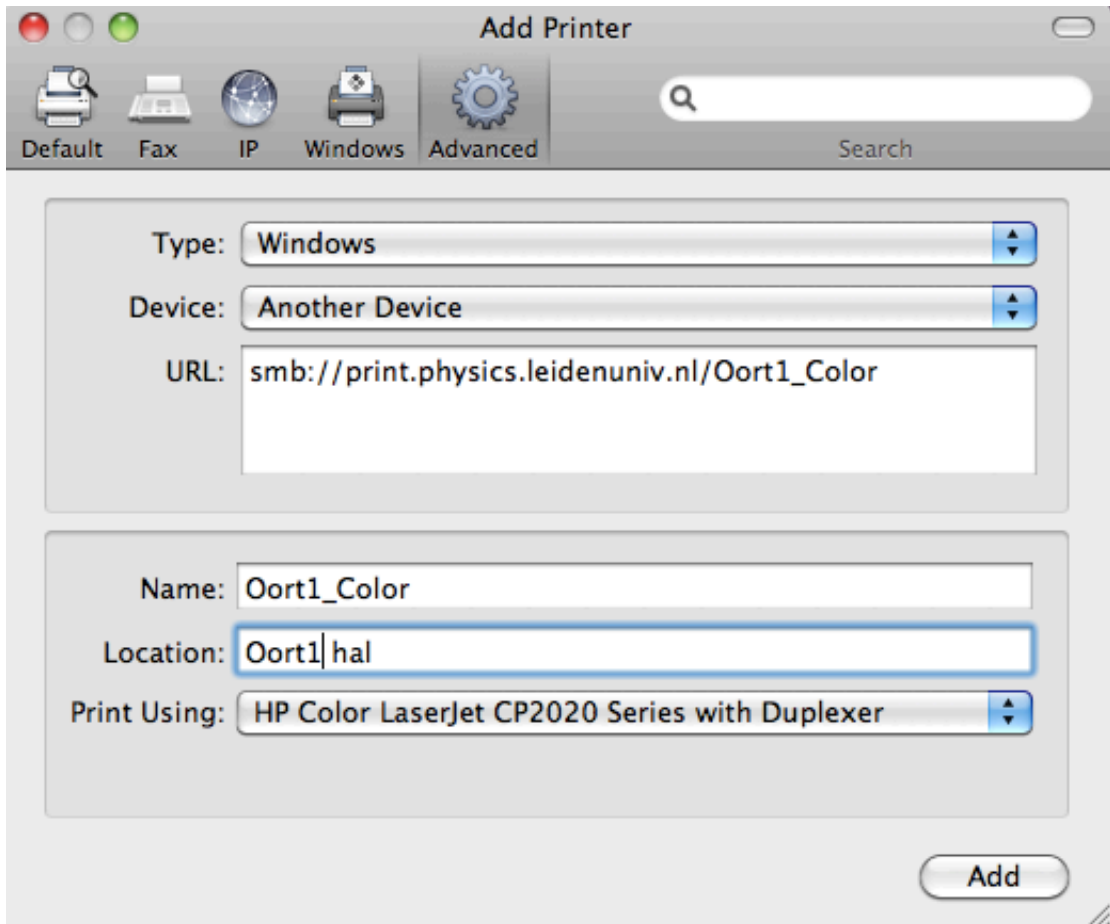


7. Click on the "Advanced" button.



8. Then enter/select the following:

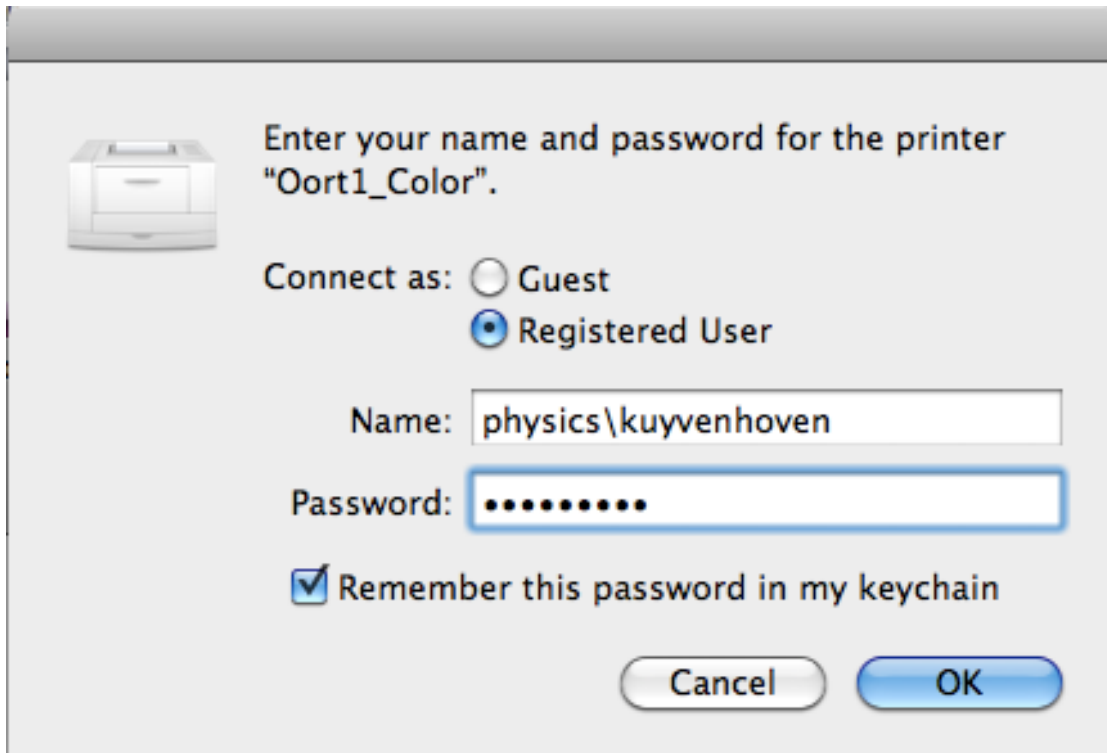
- Type: "Windows "
- Device: "Another Device"
- URL: **smb://**<insert print server URL here>/<insert queue name here>
- Name: enter a descriptive name here (suggestion: include the queue name so that the SMG can help troubleshoot later, if necessary)
- Location: enter the location for your reference
- Use: Generally select "Select Printer Software...", locate the appropriate driver for the printer, and click "OK".



9. Click "Add".



10. Configure the appropriate installed options for the printer, then click "Continue".
11. The first time you print, you will generally be prompted to authenticate with your Active Directory (AD) credentials. Please enter uofl<netID> and your Active Directory password. You may save your credentials in your Keychain by first checking the appropriate box in the authentication window.



Support

- For general support please contact the SMG.