

Tunneling

Below you will find how you can setup a tunnel from your Home Windows Desktop (or laptop) to your personal desktop or to access your Lab computer to see the data acquisition running in the Lab..

P.S. On the Windows computers SMG needs to create an account in the remote desktop user list. Please record your computer name and extend this with the domeinnaam before you are going to try the access from home, this information is recorded on the computer itself. E.g. (smg01.physics.leidenuniv.nl). Mail this information, including your account name, to helpdesk@physics.leidenuniv.nl.

Use or install VNC (Virtual Network Computing) on your lab computer if it is running Linux/Unix.

Beschrijving hoe tunneling thuis wordt opgezet:

1. Get the most recent version of the sftp program “Tunnelier” from:<https://www.bitvise.com/ssh-client-download>
2. Install Tunnelier using an account with administrator rights (if you have not setup this as a separated account, you have administrator rights on your computer by default).
3. Start tunnelier.
4. Go to tab “Login” and modify the content according to **fig.1**
5. Enter as “Username” your standard Physics username, prepend it with physics\.....
6. Change “Initial Method” from Password default to None.
7. Go to tab “Options and Terminal” and modify the content according to **fig.2**
8. Uncheck the check box for “Open Terminal” and “Open SFTP”.
9. Go to tab “RDP” nd modify the content according to **fig.3**
10. Enter the name of your personal Desktop or lab computer at work into “Target Server” e.g. (SMG01.Physics.LeidenUniv.nl). **This is possible only after SMG has created a special account for you on the work desktop/lab computer.**
11. After all this save the configuration by clicking the icon “Save profile” at the left side.
12. Test this profile by closing and restarting Tunnelier and load the saves profile.
13. Now click “Log in” left bottom.
14. After this you will see a window: **fig.4** ‘Host Key Verification’ and click to ‘Accept and Save’.
15. Then the Login windows appears **fig.5**, now enter your password.
16. If you want to connect to your persona Windows Desktop of Lab computer click the icon “New Remote Desktop” on the left. **Fig.6**

Fig. 1

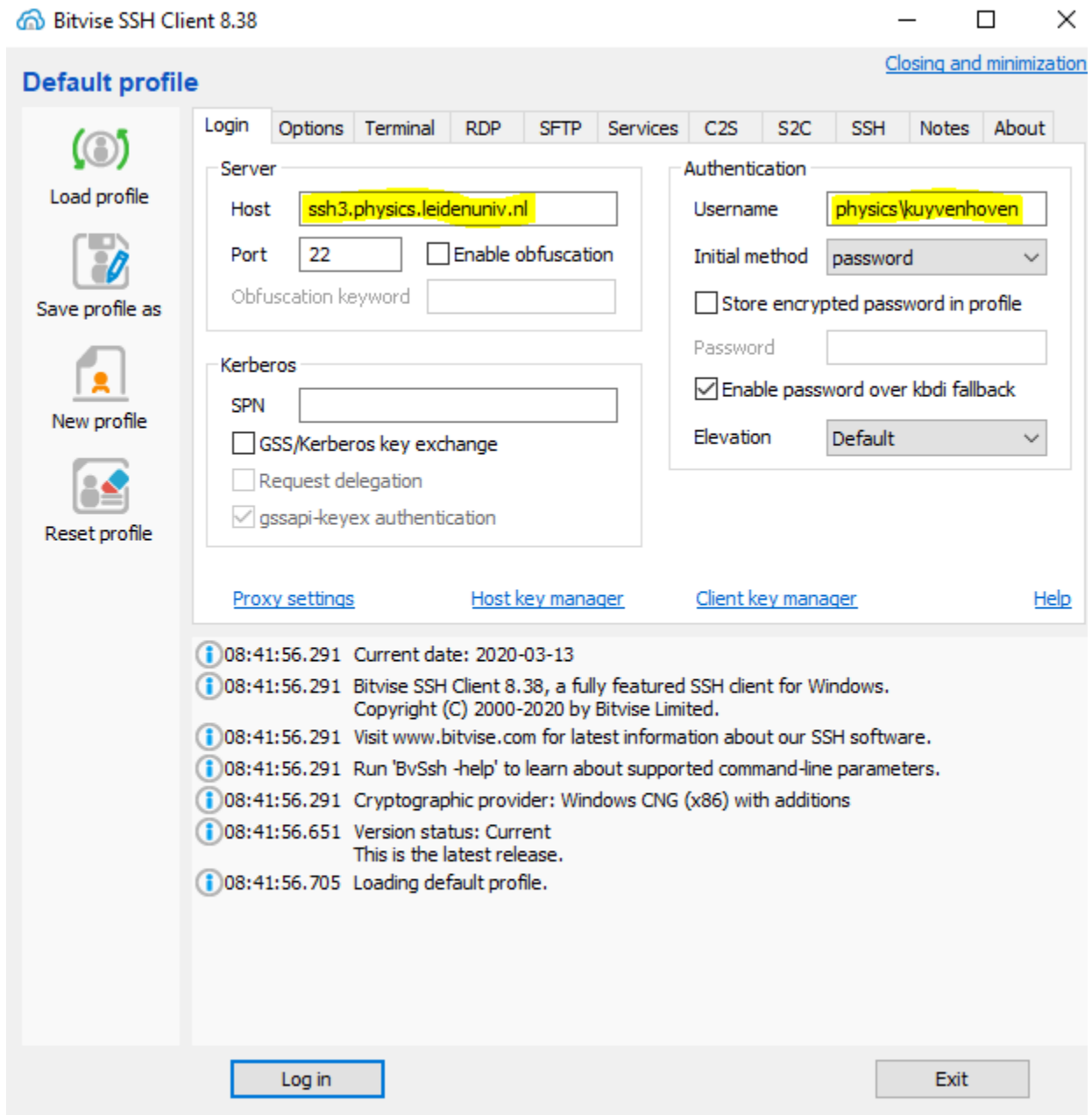


Fig.2

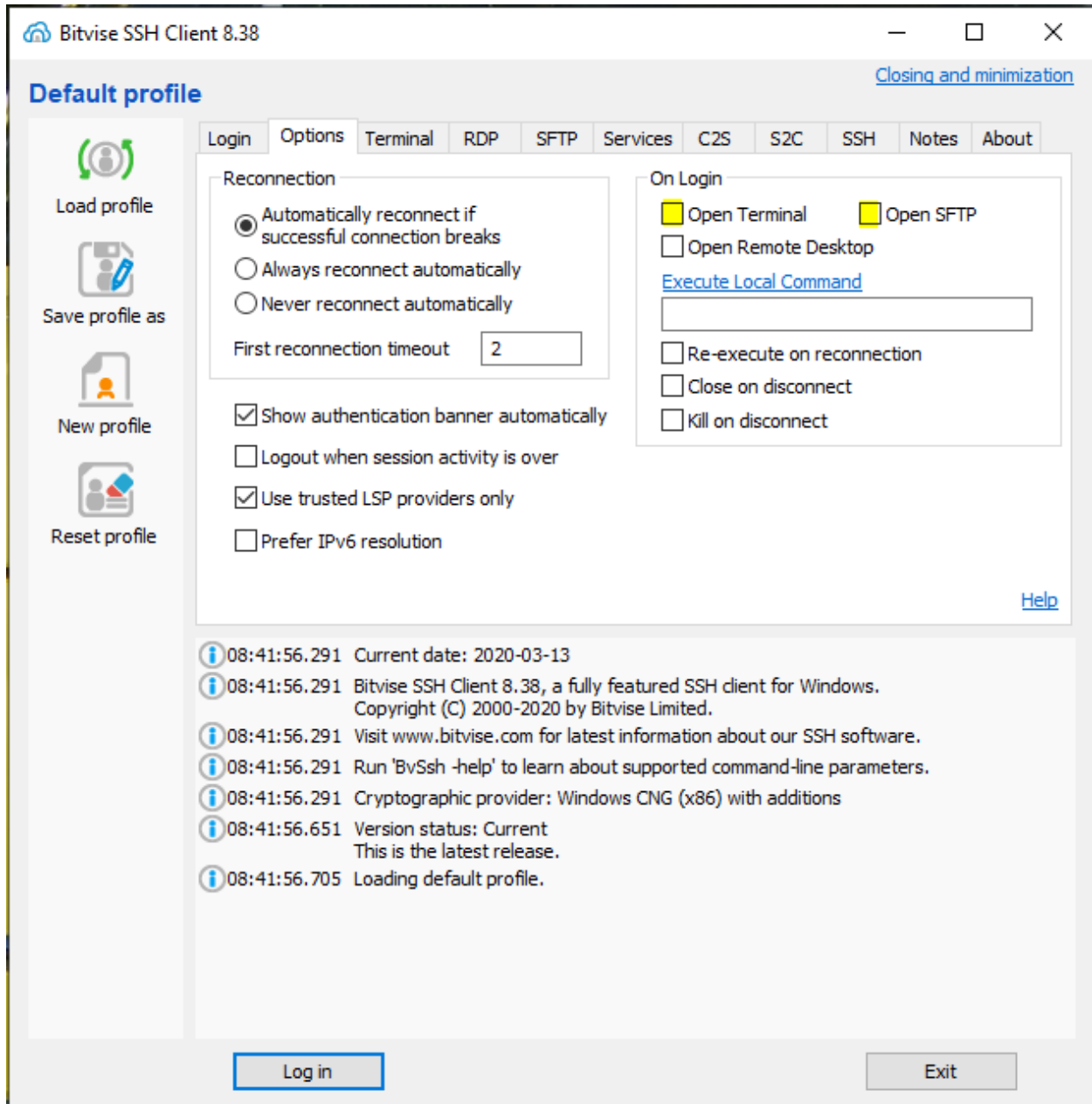


Fig.3

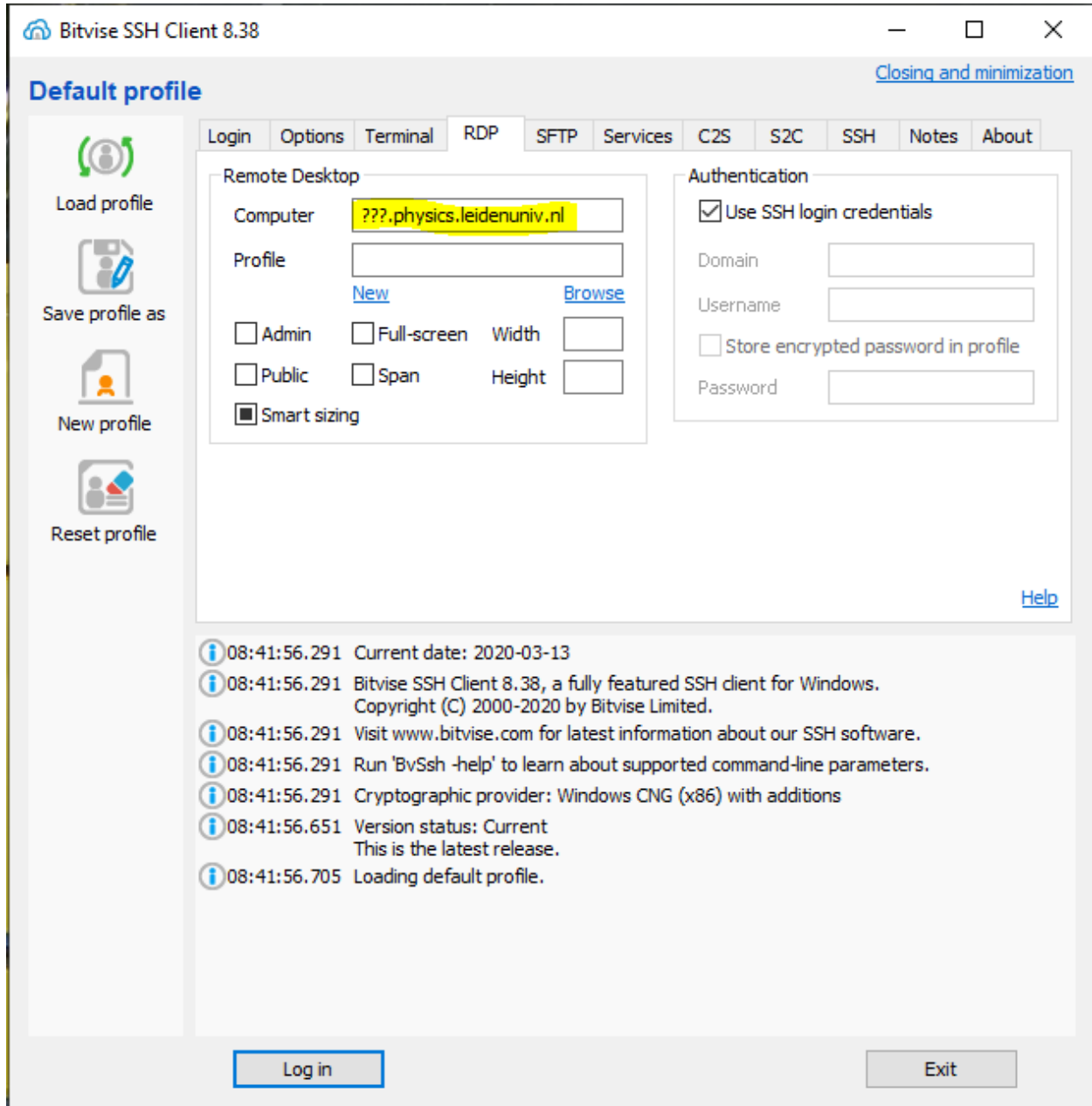
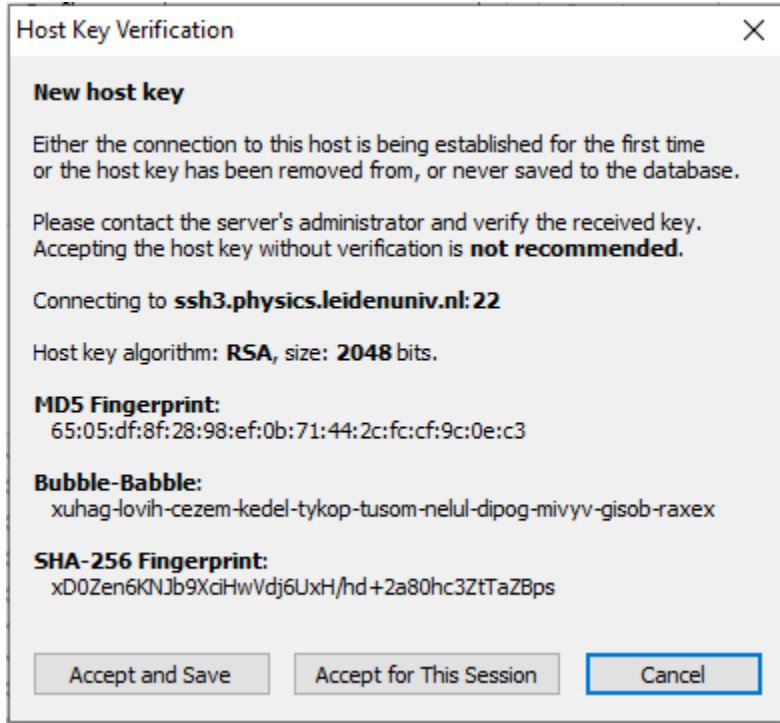


Fig.4



Accept and Save

Fig.5

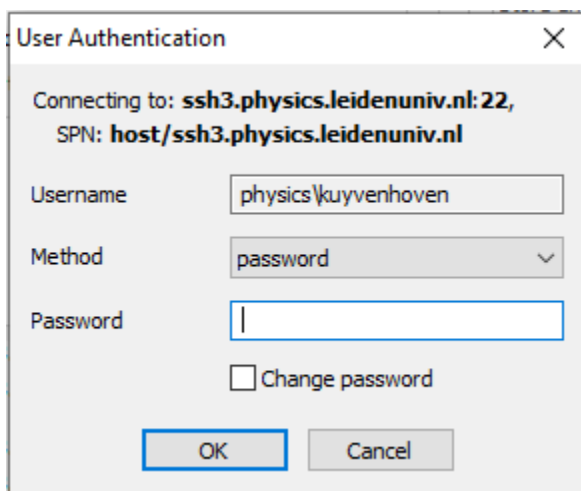


Fig.6

